



PRESS RELEASE | PARIS | NOVEMBER 29, 2018

---

## Pollution: New ammonia emission sources detected from space

Researchers from the CNRS<sup>1</sup> and the Université Libre de Bruxelles (ULB) have prepared the first global map of the distribution of atmospheric ammonia (NH<sub>3</sub>) by analyzing measurements taken by satellites between 2008 and 2016. The IASI interferometer developed by the CNES allowed them to catalog more than 200 ammonia sources, two-thirds of which had never been identified before. These sources are essentially sites of intensive livestock production and industrial activity. The team's findings are published in *Nature* (December 5).

For the last twelve years, the IASI interferometer on board three successive Metop<sup>2</sup> satellites have been providing scientists with global data on various atmospheric components, including ammonia. Atmospheric ammonia merits particular attention because it breaks down into fine ammonium salt particles that degrade the quality of the air we breathe. Yet the processes regulating concentrations of this gas are still poorly understood, especially on the local scale.

Using the daily data on ammonia levels recorded by the interferometers over a period spanning nearly ten years, the researchers generated a map of the global atmospheric distribution of ammonia whose resolution is on the order of a square kilometer. By combining their map with satellite imagery, they uncovered and categorized 241 point sources of anthropogenic NH<sub>3</sub> emissions—83 linked to intensive livestock production and 158 to industrial activity—as well as 178 wider emission zones. (*See map*).

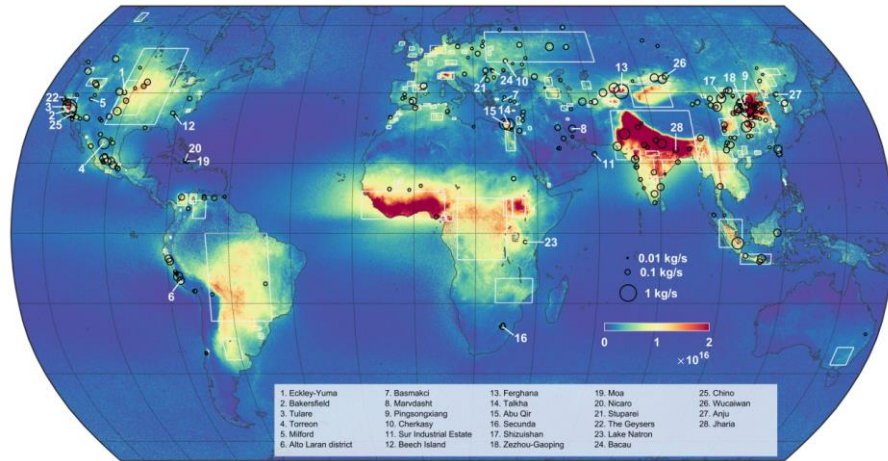
In addition to recording new sources not found on current emission inventories, the study has shown that levels of emissions from previously identified sources are greatly underestimated. By observing changes in the data over time, the team was also able to trace developments of the associated human activities, like the startup or shutdown of industrial complexes or the expansion of infrastructures for intensive animal farming.

These findings suggest that better management of the impact of ammonia pollution requires a comprehensive review of ammonia emissions, which are much higher than presently suggested by inventories.

---

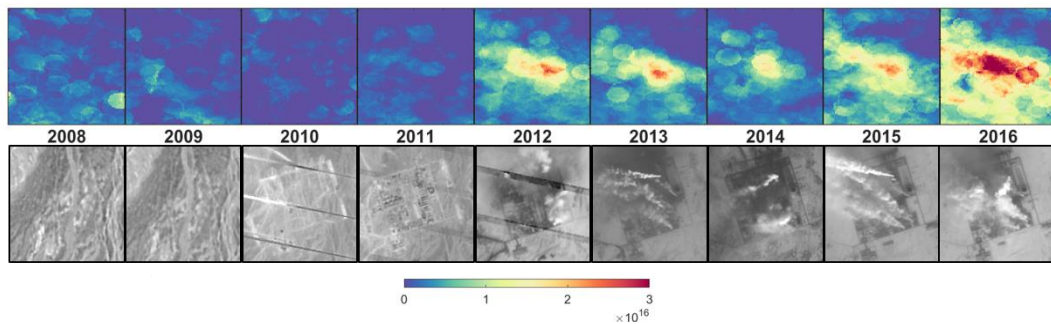
1. These scientists belong to the LATMOS research laboratory (CNRS / Sorbonne University / Université de Versailles Saint-Quentin-en-Yvelines). Along with eight other labs whose research focuses on the global environment, it is a part of the Institut Pierre Simon Laplace (IPSL).

2. Launched by the ESA and EUMETSAT in 2007, the Metop program continuously records atmospheric composition by satellite. The data collected will ultimately cover a period of 18 years. Three satellites have been deployed in succession, the last being Metop-C, commissioned on November 7, 2018.



Map of atmospheric ammonia fluxes based on 9 years of IASI data. It shows 242 hot spots, surrounded by black circles, and 178 wider emission zones, framed by white rectangles.

© Martin Van Damme and Lieven Clarisse / ULB



Images of one point source of ammonia emissions in China attributed to the construction of an industrial complex. Bottom: Landsat satellite photographs (2008–2016) showing the facility's construction. Top: IASI ammonia measurements over the same period.

© Martin Van Damme et Lieven Clarisse / ULB (IASI); © Google / NASA (Landsat)

[Video on IASI interferometer](#) (in French)

[Interactive map of atmospheric ammonia emission sources](#)

## Bibliography

**Industrial and agricultural ammonia point sources exposed.** Van Damme, M., Clarisse, L., Whitburn, S., Hadji-Lazaro, J., Hurtmans, D., Clerbaux, C., Coheur, P.-F. *Nature*, December 5, 2018. DOI: 10.1038/s41586-018-0747-1.

## Contacts

CNRS researcher | Cathy Clerbaux | [cathy.clerbaux@latmos.ipsl.fr](mailto:cathy.clerbaux@latmos.ipsl.fr)

CNRS press | Julie Desriac | T +33 1 44 96 43 90 | [julie.desriac@cnrs.fr](mailto:julie.desriac@cnrs.fr)